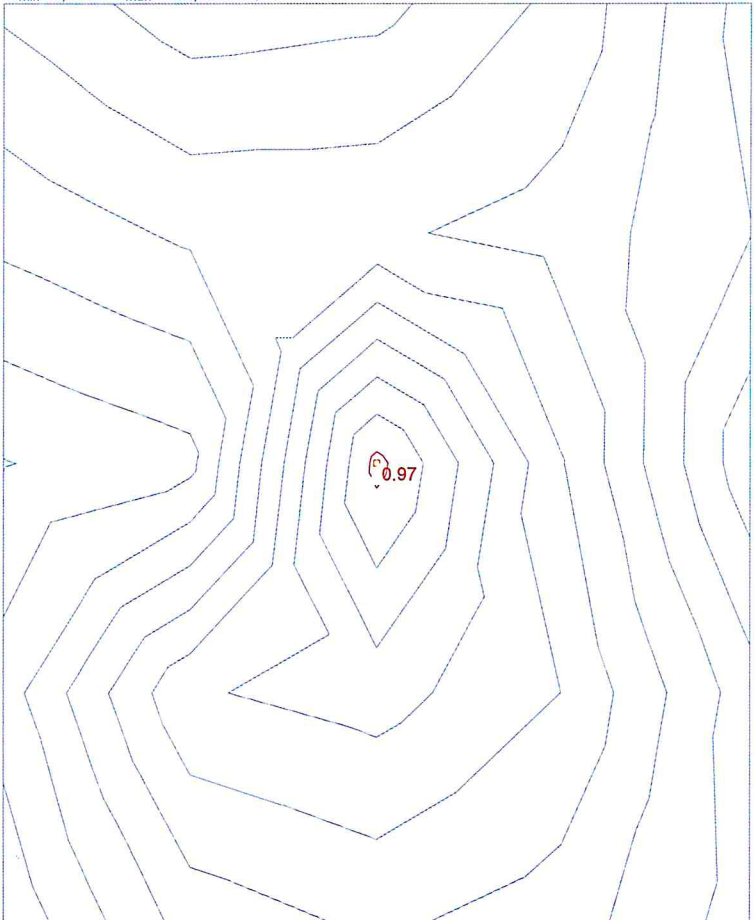


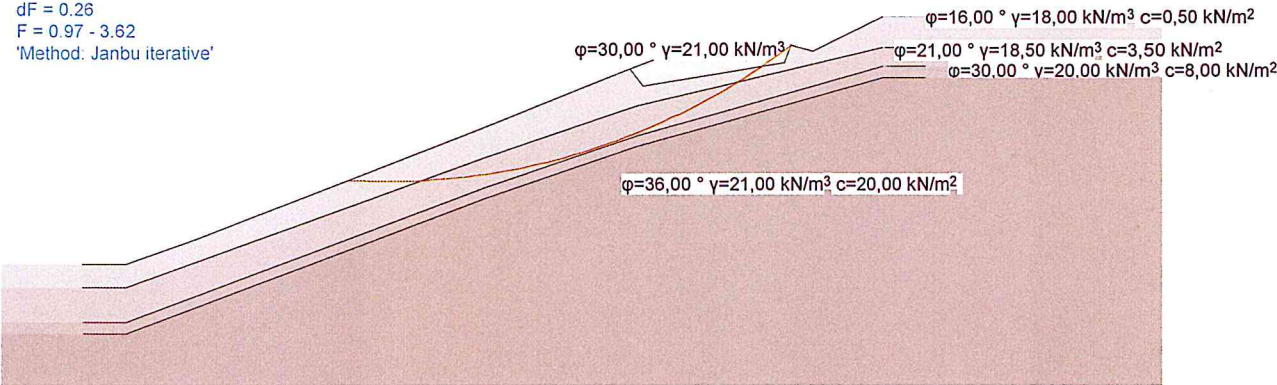
!ULS type 3, AC 1
Critical slip surface

Scale 1 :349,1

$n_x=5$ $n_y=5$
 $R_{min}=1,00$ m $R_{max}=120,00$ m $n_r=5$

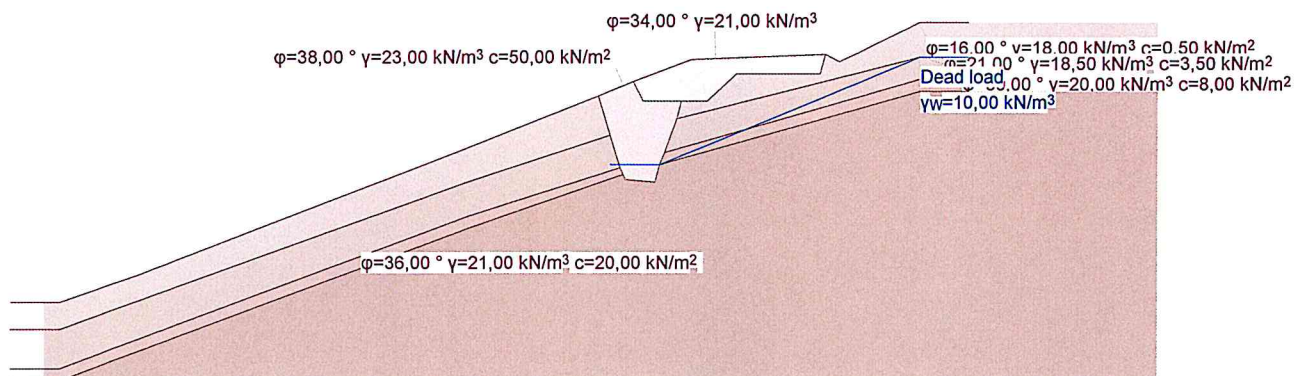


$dF = 0.26$
 $F = 0.97 - 3.62$
'Method: Janbu iterative'



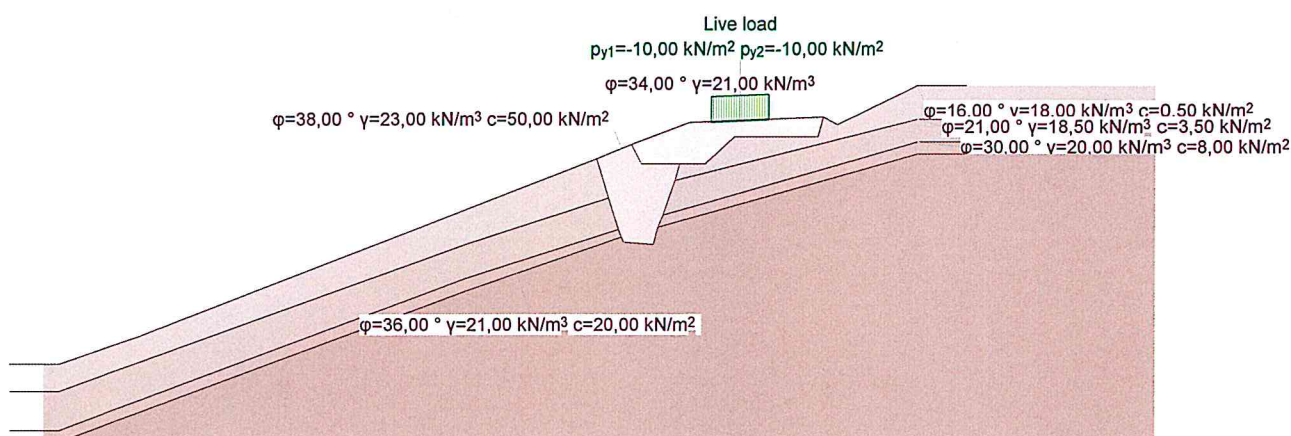
Geotechnical model

Scale 1 :308,0



Loads

Scale 1 :308,0

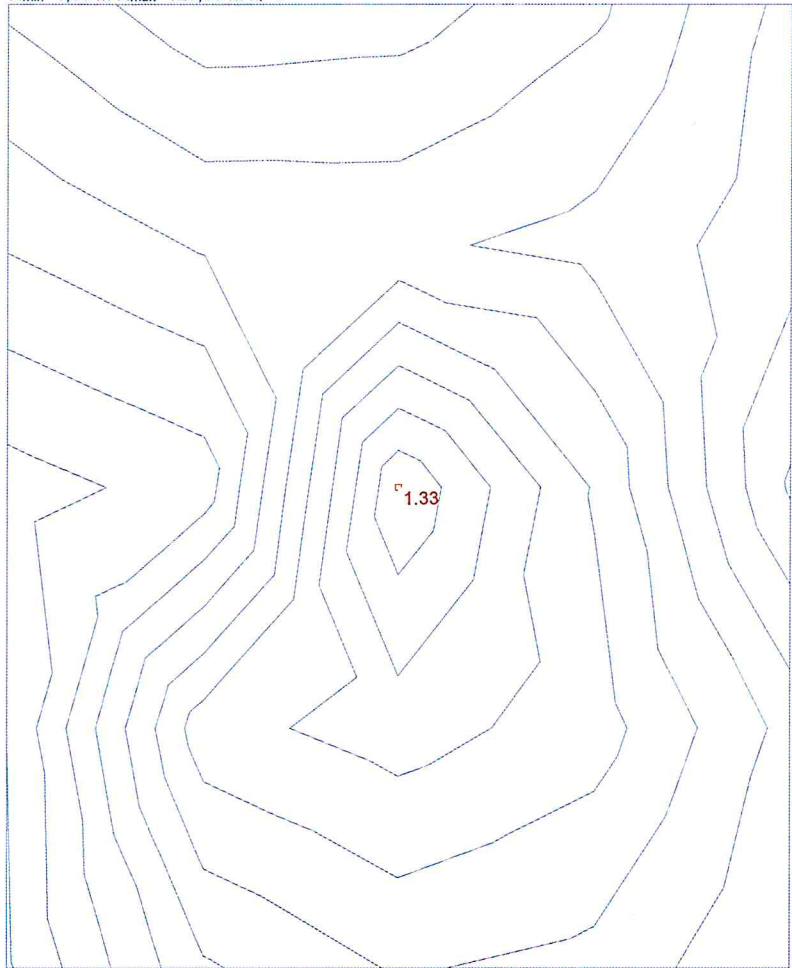


Nr.:

IULS type 3, AC 1
Critical slip surface

Scale 1 : 332,3

$n_x=5$ $n_y=5$
 $R_{min}=1,00$ m $R_{max}=120,00$ m $n_r=5$



$dF = 0.32$
 $F = 1.33 - 4.57$
'Method: Janbu iterative'

