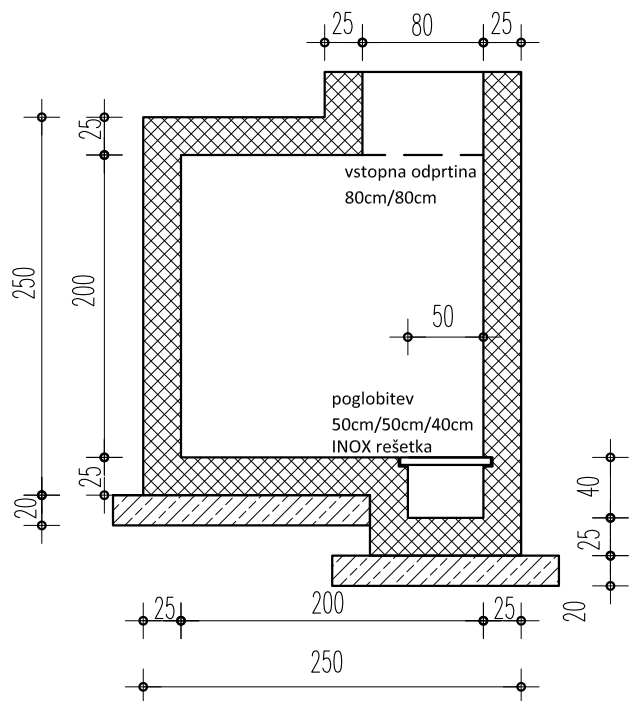
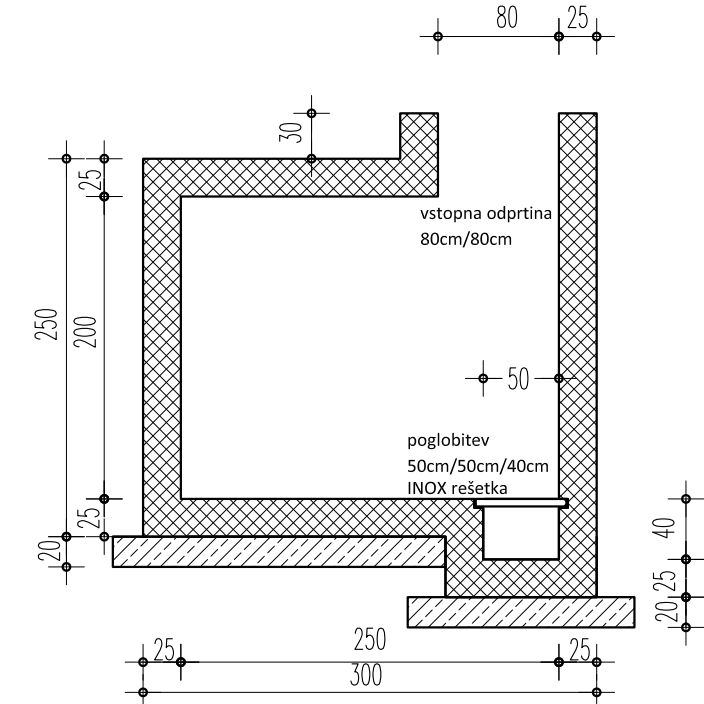


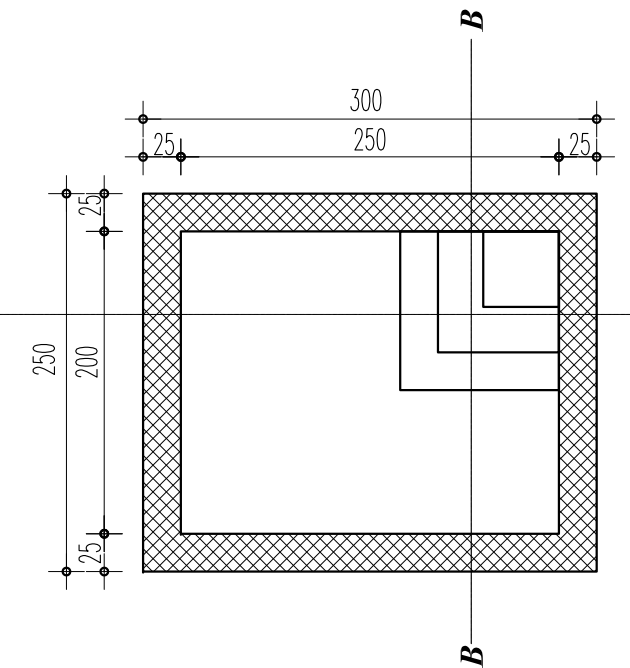
PREREZ B-B



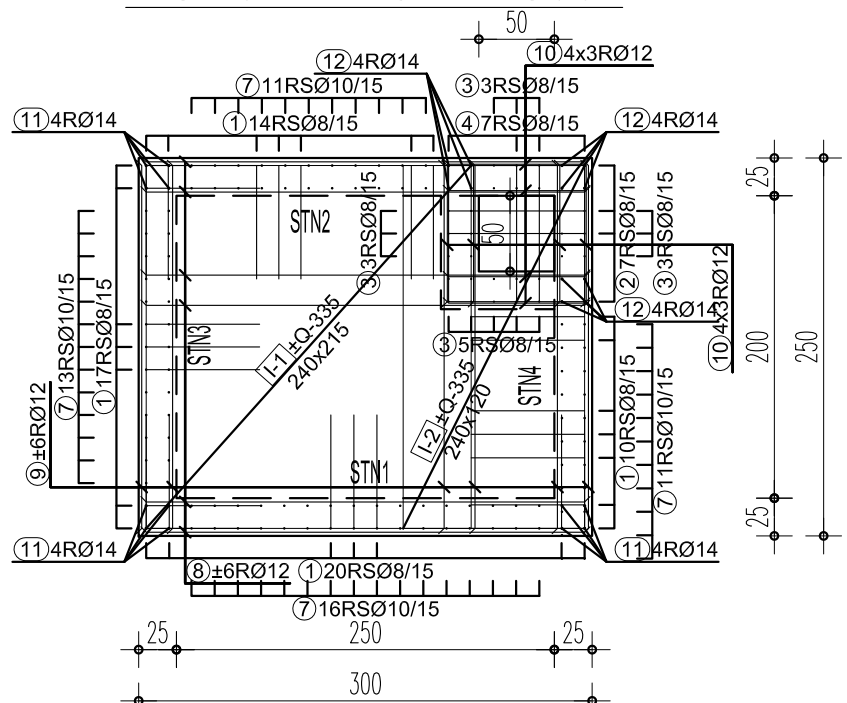
PREREZ A-A



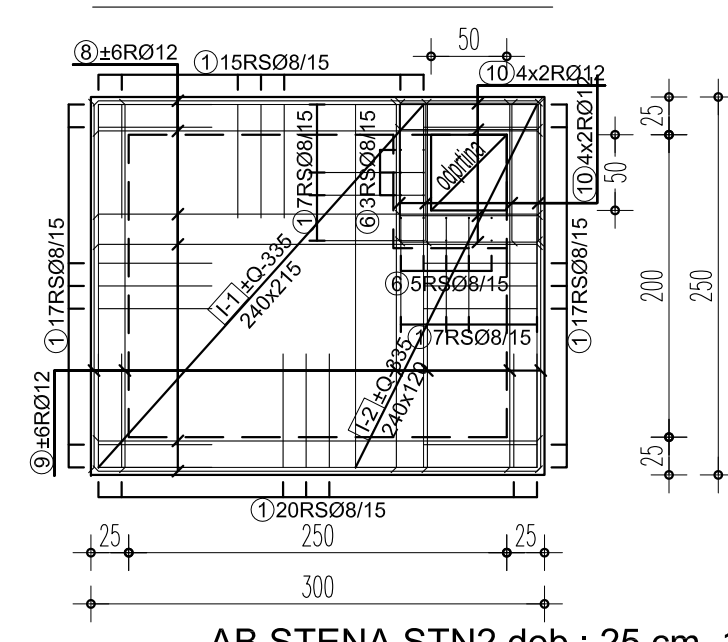
TLORIS



TLORIS TEMELJNE PLOŠČE

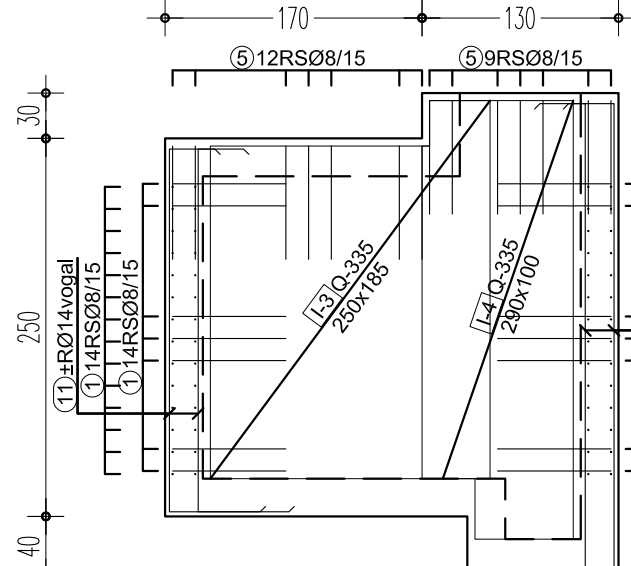


TLORIS KROVNE PLOŠČE

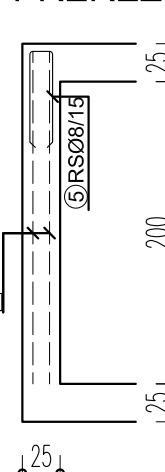


AB STENA STN2 deb.: 25 cm 1 kom.

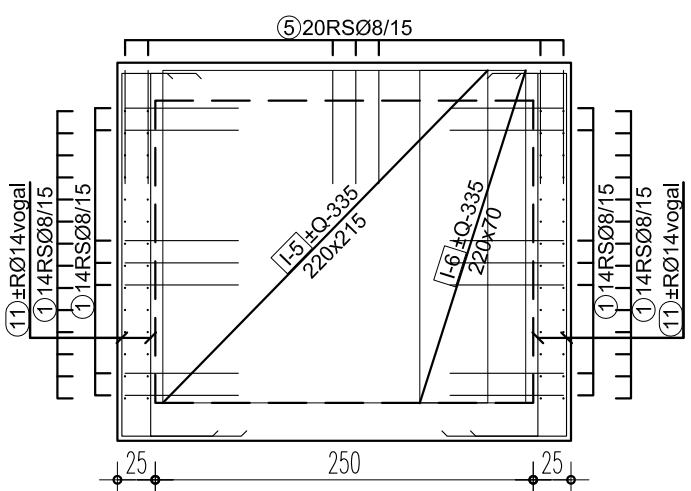
POGLED



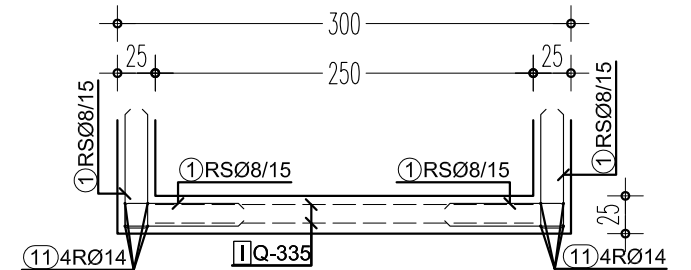
PREREZ



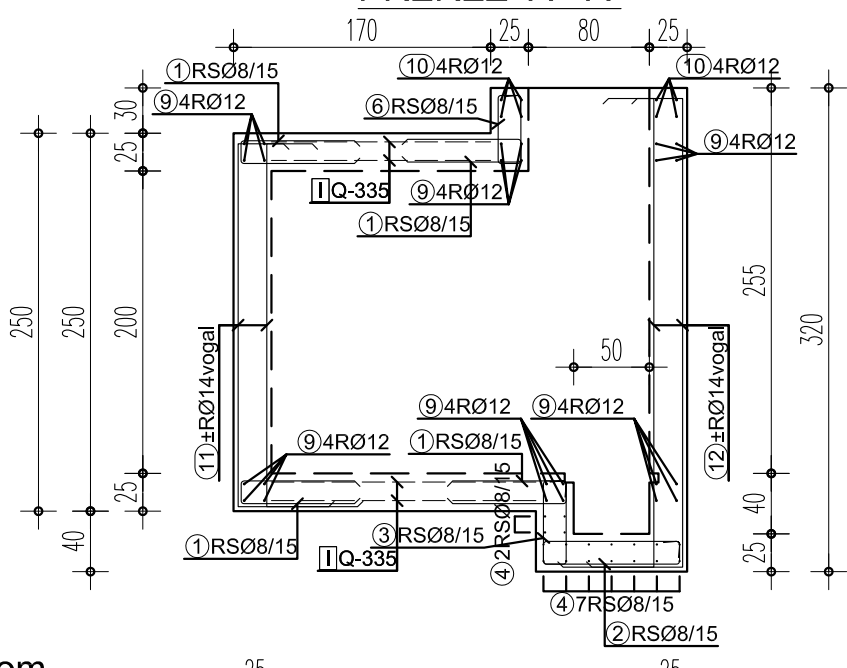
POGLED



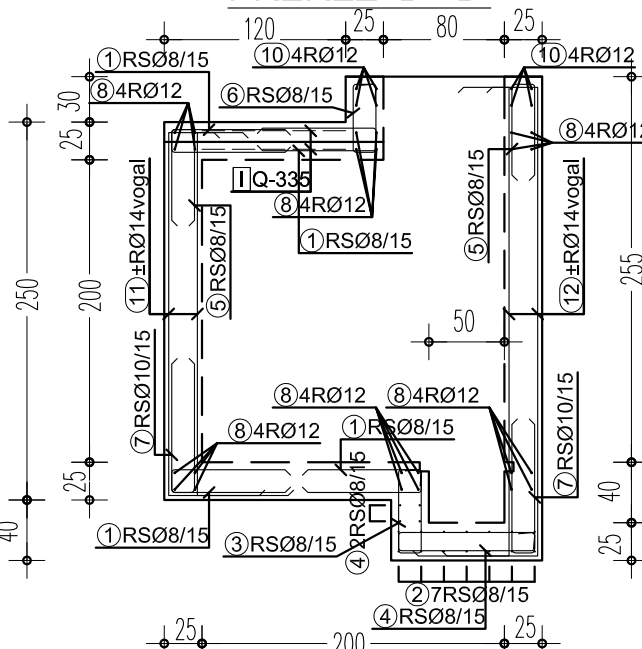
TLORIS



PREREZ A - A

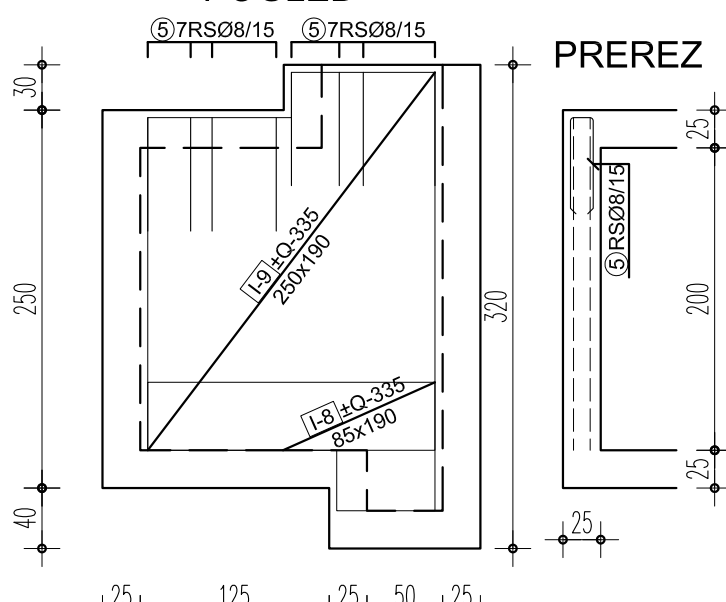


PREREZ B - B

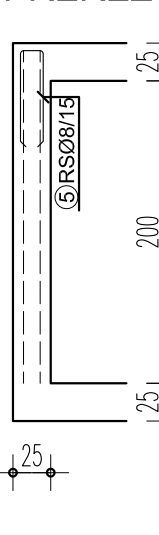


AB STENA STN4 deb.: 25 cm 1 kom.

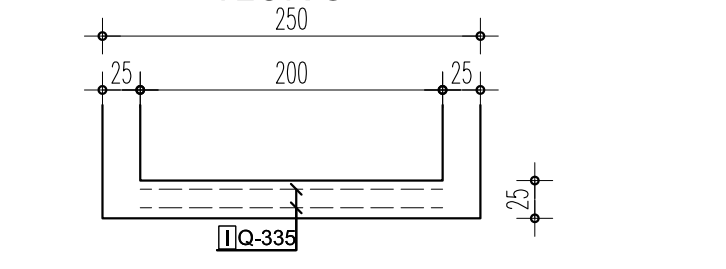
POGLED



PREREZ

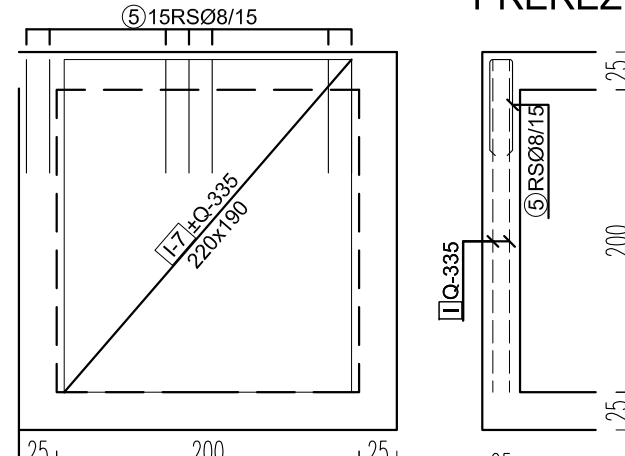


TLORIS

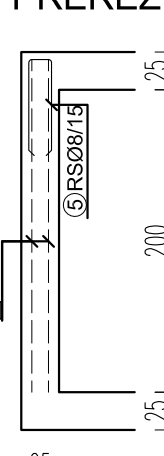


AB STENA STN3 deb.: 25 cm 1 kom.

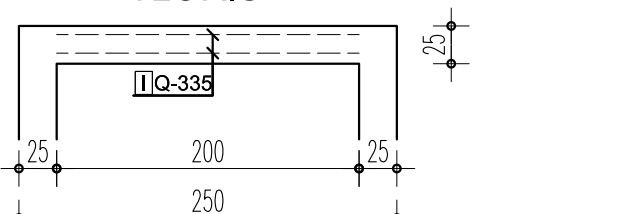
POGLED



PREREZ



TLORIS



DIMENZIJO PREBOJEV JE POTREBNO PRILAGODITI DEJANSKO VGRAJENI TEHNOLOŠKI OPREMI IN TEHNOLOGIJI TESNENJA!

ARMATURNI NAČRT JAŠKA

MATERIAL: BETON C30/37

ARMATURA: S 500 - RA 500/600

S 500 - MA 500/600

ZAŠČITNA PLAST temeljne plošče spodaj - 4,5cm

ZAŠČITNA PLAST temeljne plošče zgoraj - 4,5cm

DEBELINA AB PLOŠČ IN STEN - 25cm

VSE MERE PREVERITI NA KRAJU SAMEM

sprememba:		Investitor:	OBČINA LAŠKO	list	
projektant	MIKES d.o.o., Šaleška c. 2a, 3320 Velenje	objekt	Mestna ulica 2, SI-3270 Laško	A2	
odg.vod. projekta	G-3160	gradnja	VODOVOD REČICA 1.FAZA IN REKONSTRUKCIJA TRANSPORTNEGA VODA - NAČRT VODOHRANA NOVA GRADNJA		
Peter Rušnik d.i.g.	09/2017	načrt	PZI		
odg. projektant	G-2401		NAČRT GRADBENIH KONSTRUKCIJ JAŠEK		
Mitja Kopušar u.d.i.g.	09/2017		ARMATURNI NAČRT		
obdelal	G-2401	št. proj.	2017324	št. nočr.	2017324
Mitja Kopušar u.d.i.g.	09/2017			datum	09/2017
					1:50